

Author Queries

Journal: Proceedings of the Royal Society B

Manuscript: rspb20110289

- Q1** Please supply page number for the display quotation.
- Q2** Please suggest whether the word 'suit' can be replaced with 'suite'.
- Q3** Please supply volume number for ref. [71].
- Q4** Reference Tekle *et al.* (2008) and Burki & Pawlowski (2009) have been cited in text not provided in the list. Please supply reference details or delete the reference citation from the text.

Review

The chastity of amoebae: re-evaluating evidence for sex in amoeboid organismsDaniel J. G. Lahr^{1,*}, Laura Wegener Parfrey¹,
Edward A. D. Mitchell², Laura A. Katz^{1,3} and Enrique Lara²¹Graduate Program in Organismic and Evolutionary Biology, University of Massachusetts,
Amherst, MA 01003, USA²Laboratory of Soil Biology, Institute of Biology, University of Neuchâtel, Rue Emile-Argand 11,
2000 Neuchâtel, Switzerland³Department of Biological Sciences, Smith College, Northampton, MA 01063, USA

Amoebae are generally assumed to be asexual. We argue that this view is a relict of early classification schemes that lumped all amoebae together inside the ‘lower’ protozoa separated from the ‘higher’ plants, animals and fungi. This artificial classification allowed microbial eukaryotes, including amoebae, to be dismissed as primitive, and implied that the biological rules and theories developed for macro-organisms need not apply to microbes. Eukaryotic diversity is made up of 70+ lineages, most of which are microbial. Plants, animals and fungi are nested among these microbial lineages. Thus, theories on the prevalence and maintenance of sex developed for macro-organisms should in fact apply to microbial eukaryotes, though the theories may need to be refined and generalized (e.g. to account for the variation in sexual strategies and prevalence of facultative sex in natural populations of many microbial eukaryotes). We use a revised phylogenetic framework to assess evidence for sex in several amoeboid lineages that are traditionally considered asexual, and we interpret this evidence in light of theories on the evolution of sex developed for macro-organisms. We emphasize that the limited data available for many lineages coupled with natural variation in microbial life cycles overestimate the extent of asexuality. Mapping sexuality onto the eukaryotic tree of life demonstrates that the majority of amoeboid lineages are, contrary to the popular belief, anciently sexual and that most asexual groups have probably arisen recently and independently. Additionally, several unusual genomic traits are prevalent in amoeboid lineages, including cyclic polyploidy, which may serve as alternative mechanisms to minimize the deleterious effects of asexuality.

Keywords: Amoebozoa; Rhizaria; asexual; evolution of sex; meiosis; karyogamy

Let us consider for a moment, a single *Ameba* ... not as a cause of disease, but as a unit mass of protoplasm which ... performs all of the fundamental vital activities common to living things ... there is no reason to doubt that [the chemical composition of these unit masses] agrees with that of other living substances, since the accompanying properties of protoplasm—metabolism, growth and reproduction—are obviously performed in the same way.

Q1

[1]

1. INTRODUCTION

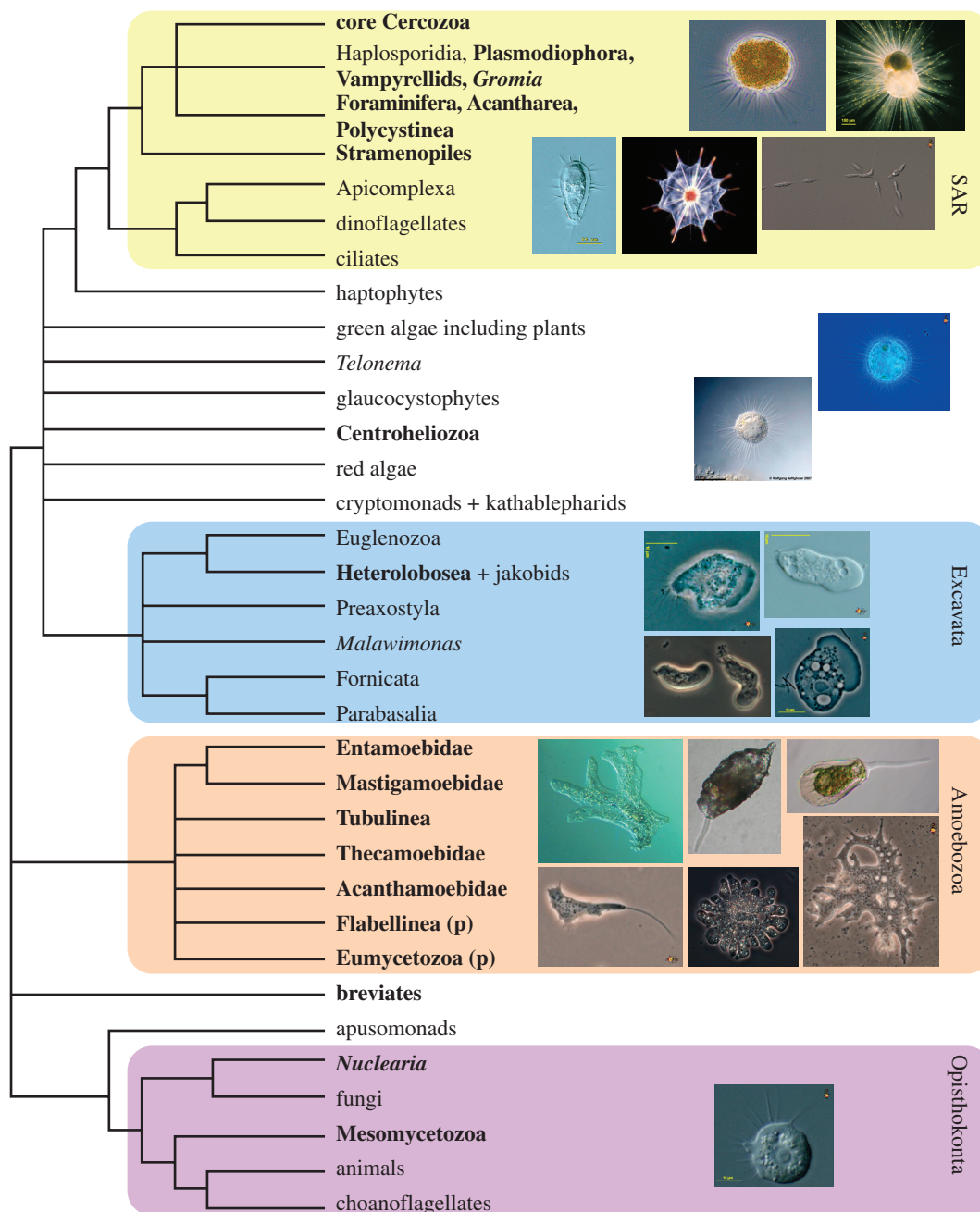
Microbial eukaryotes were historically classified as primitive plants and animals [2] or separated into their own kingdom [3–5]. This view received wide support with Whittaker’s five-kingdom classification system [4] and continues to be popular in many circles. One consequence of lumping microbial eukaryotes into an artificial taxonomic unit (variously called Protista, Protoctista or Protozoa) is the implicit view that microbes are

fundamentally different entities than plants, animals and fungi. As a result, microbial eukaryotes have been either dismissed as primitive or ignored in much of the theoretical work on eukaryotes, such as speciation theory [6] and theories on the evolution of sex [7], with the notable exception of Bell [8]. However, given the current classification of eukaryotes, this dismissal is no longer acceptable. In recent analyses, the eukaryotic tree of life is divided into a number of high-level lineages in which macro-organisms nest within predominantly microbial clades, demonstrating that the evolution of multicellularity has arisen multiple times [9–14]. Hence, there is no evidence to suggest that unicellularity represents by definition a ‘primitive’ condition in eukaryotes.

The realization that there is no fundamental distinction between macro- and micro- eukaryotes calls for reassessment of the applicability of theories on the evolution of sex that were developed in macro-organisms to their microbial relatives. Differences between macro-organisms and microbial eukaryotes must be understood, as suggested by Calkins [1], in terms of cell characteristics, habit and life cycle rather than an artificial and outdated taxonomic split. Current evidence suggests that sex has a single evolutionary origin and was present

* Author for correspondence (daniel.lahr@gmail.com).

Electronic supplementary material is available at <http://dx.doi.org/10.1098/rspb.2011.0289> or via <http://rspb.royalsocietypublishing.org>.



172 Figure 1. Distribution of amoeboid lineages in the eukaryotic tree of life. This phylogenetic hypothesis of eukaryotic evolution
173 is adapted from Parfrey *et al.* [13], and depicts the well-supported higher level groupings of eukaryotes. The lineages that have
174 members with amoeboid morphology are in bold. Images depict exemplary amoeboid organisms and were retrieved from
175 micro*scope (<http://starcentral.mbl.edu/microscope/portal.php>).
176
177

178 in the last common ancestor of eukaryotes [15]. Hence,
179 sex is a synapomorphy for extant eukaryotes and, where
180 sex is absent, it must have been secondarily lost. The
181 patchy distribution of sexual and asexual amoeboid
182 lineages in current phylogenetic reconstructions requires
183 many independent losses of sex (figure 1), or may indicate
184 that sex is present but not reported in many lineages. We
185 argue here that the amoeboid lineages are ideal candidates
186 to investigate whether asexuality has been lost many
187 times, because amoebae have generally been assumed to
188 be asexual and are widespread in the tree of eukaryotes.

189 The body of theory developed from macro-organismal
190 observations holds that sexuality should be pervasive and
191 that asexuality should be limited to recent twigs on the
192 tree of eukaryotic life [16]. We define sex as the presence

242 of a meiotic reduction of the genome complement fol-
243 lowed eventually by karyogamy (nuclear fusion) in an
244 organism's life cycle. In contrast to amphimixis [17],
245 our definition allows autogamy to be considered sex.
246 Sex is argued to be advantageous because it generates
247 variability by allowing independent assortment of genetic
248 material through recombination (the advantage of sex
249 [18,19]). Conversely, asexual lineages are argued to be
250 subject to the accumulation of deleterious mutations
251 through a process described as Muller's ratchet [19,20],
252 leading to the prediction that asexual lineages should be
253 short-lived and hence ancient asexuals will be rare
254 [7,20,21]. On the other hand, sex is not beneficial for
255 the individual in the short term, because only half of its
256 genetic material is transmitted to the next generation

(the cost of meiosis [7]). Recent efforts in modelling the evolution of sex show that incorporating genetic drift is essential to understand the dynamics of populations with finite size: when both drift and selection are taken into account, sex and recombination bring together alleles with higher selection coefficients that tend to be found in different individuals, outcompeting asexual lineages [22]. Thus, there are two main situations where asexuality is expected: (i) in relatively young lineages such as several species of scale insects with obligate apomictic thelytoky [23], and (ii) in systems with very large population sizes, which rely on strategies for rapid reproduction (cell/organism replication) [21].

We posit that the purported advantages and disadvantages of sex observed in multicellular macro-organisms should also apply to microbial eukaryotes. However, some caveats must be taken into account when comparing them. Firstly, life cycles are much more varied and complex in microbial eukaryotes [24]. For instance, in most plants and animals, sex and growth are tightly linked, i.e. they cannot complete development without sex [15]. Conversely, many microbial eukaryotes are only facultatively sexual, i.e. they turn sex on or off depending on environmental conditions.

Knowledge about the natural history of microbial eukaryotes is deeply hindered by the difficulties of observation, when compared with macro-organisms. In most cases, organisms are assumed to be asexual because no sex has been observed; the gold standard for establishing sexuality remains direct observation of sexual phases of the life cycle. Proving that sex occurs in microbial eukaryotes is further hindered as there are often no sexually dimorphic forms and sexual life-cycle stages may not occur readily in laboratory conditions, or they may be cryptic [25]. Further, many amoebae are not culturable (e.g. polycystine radiolaria [26]). Despite these difficulties, sex has been observed in several microbial and non-microbial taxa long considered asexual when culturing conditions were modified or appropriate mating types were made available, including Darwinullid ostracods [27], arbuscular mycorrhizal fungi [28] and the filamentous mould *Aspergillus* [29], and *Dictyostelium* (see below). Thus, it may not be prudent to rely on the absence of evidence as evidence for the absence of sex [21,25].

Given the long history of study and diversity of methods used, evidence for sex in amoeboid lineages comes in a wide range of forms. We divide the continuum of evidence for sex into three categories: (i) confirmed sexual life cycle, (ii) direct evidence for sex, and (iii) indirect evidence that suggests a sexual life cycle but is inconclusive. A confirmed sexual life cycle is the irrefutable combination of both meiosis and karyogamy (nuclear fusion). Direct evidence for sex is provided by microscopic observations of either meiosis or karyogamy without confirmation of the other, or the presence of meiosis-specific genes. We realize that for many biologists documenting meiosis alone is enough to confirm sexuality. However, we feel that observation of both parts of the cycle is necessary given the variation in sexual mechanisms found in microbial eukaryotes. We are defending a more logical stance: if we define a phenomenon by the union of two elements, then we must expect to see the two elements for confirmation of the said phenomenon.

Conversely, the confirmation of karyogamy alone may indicate a parasexual system (one where subsequent haploidization occurs by some other means than meiosis [30]; also see the case of *Giardia* [31]) but more strongly indicates the possibility of sex. Finally, many characteristics provide indirect evidence for the hypothesis that an organism is sexual, but fall short of conclusively demonstrating sex. These include molecular evidence of recombination, cytoplasmic fusion, evidence for complex life cycles with more than one trophic stage and production of putative reproductive cells (e.g. swarmer cells that can be interpreted as gametes).

2. AMOEBOID LINEAGES

The broad distribution of amoeboid organisms across the eukaryotic tree of life makes them an ideal system for assessing the applicability of theories on sex to microbial lineages. Amoeboid organisms are defined by the ability to produce pseudopodia for locomotion or feeding. They were historically lumped into a single group, named Sarcodina or Rhizopoda depending on the classification system [32]. However, recent work demonstrates that amoebae are found in at least 30 distinct lineages (i.e. close to half of all described eukaryotic lineages) that are scattered throughout the tree of eukaryotes ([32,33], figure 1). The majority of these lineages are clustered in the Amoebozoa and Rhizaria [32], with the remaining lineages scattered across the tree (figure 1). The term ‘amoeba’ is used here descriptively as a morphological category and has no phylogenetic meaning. Here, we re-examine the sexuality of amoebae in the context of the current phylogenetic framework of eukaryotes. We review evidence for sex in lineages traditionally considered asexual, and discuss reports of sexual life cycles that were originally considered exceptions or misinterpretations.

(a) *Amoebozoa*

The Amoebozoa are a higher level grouping encompassing over 5000 species and are currently divided into approximately 14 lineages (figure 2a). These lineages include familiar amoebae, such as the star of high school biology classes *Amoeba proteus* and the human enteric parasite *Entamoeba histolytica*. The majority of organisms shown to belong within Amoebozoa have amoeboid characteristics [32], although these encompass a wide range of morphologies, such as slime moulds, lobose testate amoebae (Arcellinida) and amoeboflagellates. Asexuality in this group is thought to be a defining characteristic [35] or sexuality is assumed to be unknown [36]. However, deep inspection of the literature reveals evidence for sex in several Amoebozoa lineages: the dictyostelid sorocarpic slime moulds and myxogastrid plasmodial slime moulds, Thecamoebida, Arcellinida, Leptomyxida, the genera *Entamoeba*, *Pelomyxa*, *Mastigamoeba*, *Trichosphaerium*, the sorocarpic slime mould *Copromyxa* and a number of protosteloid amoebae (figure 2a). We will briefly review the evidence for each of these groups.

Confirmed sexual life cycles are described for two lineages: the dictyostelid sorocarpic slime moulds and the myxogastrid plasmodial slime moulds. The dictyostelids illustrate the difficulty of observing sex in the laboratory. Known for their asexual life cycles [37,38],

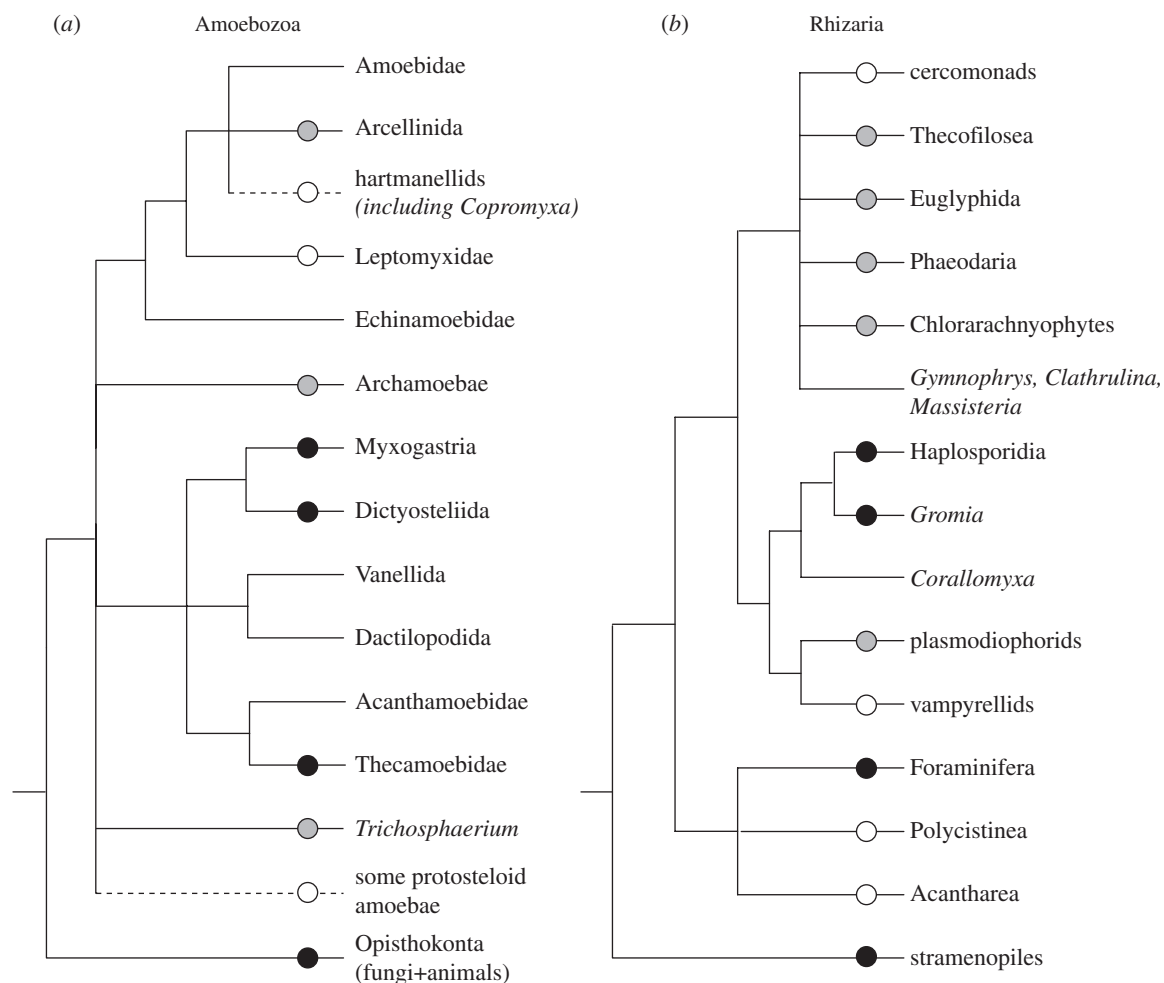


Figure 2. Distribution and types of evidence for sex in the main lineages of the two largest amoeboid groups: (a) Amoebozoa and (b) Rhizaria. The topology of these illustrative trees are a consensus of well-supported lineages derived from Tekle *et al.* (2008), Burki & Pawlowski (2009) Shadwick *et al.* [34] and Parfrey *et al.* [13]. Dashed lines represent non-monophyletic taxa. Black circles, confirmed sexual life cycle; grey circles, direct evidence for sex (meiosis, karyogamy or sex genes); white circles, indirect evidence for sex (cytoplasmic fusion, presence of putative gametes).

it was only in the 1970s that appropriate mating types of *Dictyostellium* were brought into culture and the sexual life cycle was fully documented [39–41]. The Myxogastria go through meiosis and fuse to form diploid plasmodia [42,43]. Myxogastria have complex mating systems, with up to 13 mating types (roughly equivalent to sexes) described [44].

Three lineages within Amoebozoa have direct evidence of sexual life cycles: the free-living thecamoebids, the sorocarpic slime mould *Copromyxa* and the testate lobose amoebae (Arcellinida). The thecamoebid *Sappinia diploidea* makes a bicellular cyst where zygote formation is thought to occur [45–47]; similar cysts have been reported in the related *Sappinia pedata* [48]. The slime mould *Copromyxa* has a life cycle that is consistent with sex, although no secondary confirmation of meiosis has been described [49]. *Copromyxa* was initially considered an acrasid sporocarpic slime mould; however, acrasids have been shown to belong to the Heterolobosea, which fall within the Excavata [9], and *Copromyxa* is its own lineage [50]. Molecular studies demonstrate that *Copromyxa* is closely related to the *Hartmanella* within the Tubulinea (figure 2a; [49]). Multiple lines of evidence indicate that the Arcellinida, also members of the Tubulinea, are sexual: *Arcella vulgaris* shows microscopic

evidence of synaptonemal complexes [51], a typical structure that forms only during meiosis [52]. Molecular data from both *Arcella hemispherica* and *A. vulgaris* also demonstrate recombination in the actin gene [53]. *Parasquadrulla* and *Heleopera* go through nuclear division and subsequent fusion [54,55]. Finally, cell fusion (which we consider indirect evidence for sex, see below) has been reported for many genera of Arcellinida, though it is unclear whether karyogamy also occurs when cells fuse, or whether gamete formation occurs at other time points, (reviewed in [47]). The most complete report of karyogamy following cytoplasmic fusion is for *Diffflugia lobostoma* [56], though Rhumbler [57] did not observe fusion during long-term culturing of this species. This apparent contradiction may indicate that these were different strains, a probable situation given the prevalence of cryptic species and other uncertainty in the taxonomy of Arcellinida [58,59]. Different life-cycle observations can also result from different culturing conditions.

Finally, three taxa have direct, but controversial evidence for sex: cell fusion reports in the free-living naked amoebae Leptomyxida, a complement of meiotic gene in the human pathogen *E. histolytica* and life cycles consistent with sex in *Trichosphaerium* and others. Cell fusion is widely reported for Amoebozoa [60,61],

among the leptomyxids, *Leptomyxa reticulata* [60], *Flabellula baltica* [62] and multiple strains of flabellulids [63] are observed to fuse. Subsequently, the cells separate or persist as multinucleate stages. It is unclear whether this fusion facilitates genetic exchange or serves another purpose [36]; hence, we consider this as only supporting evidence for sex.

Entamoeba histolytica has long been considered asexual despite numerous pieces of evidence pointing to the contrary, such as appearance of putative heterozygote populations after mixing of homozygotic populations for certain isozyme classes [64,65]. The availability of the whole genome [66] shows that *E. histolytica* has the full complement of genes required for meiosis [67,68], which should have decayed if *E. histolytica* abandoned a sexual life cycle. The enigmatic genus of marine amoebae *Trichosphaerium* is reported to have an alternation of generations with gamont (sexual, including karyogamy) and schizont (asexual) stages [69]. Since meiosis has not been properly documented [70,71], we consider there is only direct evidence for sex in *Trichosphaerium*. Complex life cycles with multiple types of trophic cells that are consistent with sex have been described from a number of lineages, which are: the polyphyletic protosteloid amoebae *Clastostelium recurvatum*, *Protosporangium* spp., *Cavostelium apophysatum*, *Ceratiomyxa fruticulosa* and *Ceratiomyxella tahitiensis* [34] and the archamoebid *Pelomyxa palustris* [72].

(b) Rhizaria

The Rhizaria are a heterogeneous assemblage encompassing lineages such as Foraminifera, radiolarians and euglyphid testate amoebae, chlorarachniophytes, parasitic groups (Phytomyxea, Haplosporidia) as well as a multitude of other lesser known flagellates (figure 2b) that emerge as having fundamental ecological roles [13,73–75]. Filamentous pseudopodia are a recurrent morphological feature among amoeboid members of Rhizaria, in contrast to the lobose or broad pseudopodia of many Amoebozoa. Complete sexual life cycles are documented for two lineages: Foraminifera and *Gromia*; karyogamy or meiosis (direct evidence) has been observed in five lineages: Euglyphida, Thecofilosea, Chlorarachniophyta, Plasmodiophorida and Phaeodarea; and indirect evidence such as cell fusion or formation of putative gametes in five lineages: Acantharea, Polycystinea, *Cercomonas*, *Helkesimastix* and *Lateromyxa*.

There are at least two lineages in the Rhizaria with confirmed sexual life cycles. Foraminifera are marine amoebae defined by a dynamic network of anastomosing pseudopodia [76], and well known for producing intricate shells. They exhibit complex sexual life cycles, with meiosis and gamete production occurring at separate stages [77]. The Gromiidae also have confirmed sexual life cycles [78]. These large protists (up to several centimetres) have been observed in shallow and deep-sea sediments [79], where they are capable of denitrification in anoxic environments [80]. *Gromia* was originally classified as a genus of Foraminifera based on gross morphology, but lacks the distinctive anastomosing pseudopods of Foraminifera and branches separately in molecular phylogenies [75]. The life cycle of *Gromia* resembles that of Foraminifera, with meiosis and gamete fusion occurring at different stages.

The Euglyphid testate amoebae and the Thecofilosa have many reports of cytoplasmic fusion, which we consider indirect evidence, and also reports of karyogamy, a form of direct evidence. Euglyphid testate amoebae have primarily been studied from a faunistic perspective, as bioindicators of past and present environmental conditions [81,82], and recently from a molecular phylogenetic perspective [83–85]. In the family Euglyphidae, *Euglypha alveolata* [86], *Euglypha scutigera* [87] and *Euglypha* sp. [88] combine their cellular contents to form a cyst, or in one case a third larger shell (*E. alveolata* [89]). Similar processes have been observed in other closely related families: Assulinidae [88], Trinematidae [87,90] and Cyphoderiidae [57,90], and in the unclassified *Tracheleuglypha dentata* [91]. The formation of a third, larger cell has been reported only in Assulinidae and Euglyphidae [92,93], and not in Trinematidae and Cyphoderiidae, where cell fusion occurs within one of the copulating cells.

In some Euglyphids, cytoplasmic fusion is followed by karyogamy, providing direct evidence for sex. In *Trinema lineare*, *Valkanovia delicatula* [94], *Assulina muscorum* and *Valkanovia elegans* [93], karyogamy was documented but the ultimate fate of the synkaryon (fused nuclei) remains unknown. In *Corythion delamarei* (family Trinematidae), the synkaryon divides into four nuclei, interpreted as the result of meiosis [95]. The cytoplasm is then distributed around the four nuclei, and four naked daughter cells leave the mother shell, which is left empty. These naked cells eventually secrete a test. If the interpretation is correct and *C. delamarei* indeed goes through meiosis after cytoplasmic and karyogamy, these organisms spend most of their life cycle in a haploid stage, being diploid only when karyogamy occurs. In contrast, *T. lineare* (Trinematidae) performs ‘conventional’ binary divisions in addition to a sexual life cycle similar to *C. delamarei* [96]. Binary divisions were not observed in *C. delamarei*, or its sister species *Corythion dubium* [95]. This suggests that *Corythion* is a genus of obligate sexual organisms. In sum, there is direct evidence for sex in four families out of the five that compose Euglyphida.

The other lineage of filose testate amoebae, Thecofilosea (*sensu* [97]), presents direct evidence for sex. Recent phylogenetic analyses show they are not sister to the Euglyphida [13,75]. These amoebae may have proteinaceous or agglutinated tests and are often overlooked in environmental samples owing to their small size. Cytoplasmic fusion followed by karyogamy has been observed in both *Pseudodiffugia gracilis* and *P. fascicularis*. The fate of the synkaryon is unknown [94].

Chlorarachniophytes, a group known for their ancient secondary endosymbiosis [98], go through an elaborate alternation of flagellate and amoeboid life stages and show indirect evidence for sex. In *Chlorarachnion reptans*, flagellate cells fuse with coccoid cells; these are interpreted as ‘male’ and ‘female’ gametes [99]. In *Cryptochlora perforans*, two morphologically identical amoeboid cells fuse and produce a cyst where meiosis is thought to occur in a manner similar to euglyphids. The DNA content of the cyst is double that of the amoeboid stages, suggesting karyogamy [100]. As meiosis has not been confirmed, we consider this direct evidence as opposed to confirmed sexual life cycle. The Plasmodiophorida are obligate intracellular parasites of plants,

characterized by a specific type of mitotic division named cruciform nuclear division [101]. They have a complex life cycle with a plasmodial amoeboid phase, and meiosis has been confirmed in the group. However, karyogamy has not yet been observed [101].

The organisms collectively designated 'Radiolaria', a non-monophyletic assemblage containing Phaeodarea, Acantharea and Polycystinea, are large pelagic cells ubiquitous in the oceans. These organisms are extremely difficult to maintain in laboratory conditions, and their full life cycle has never been documented, but observations reveal evidence that suggests sex. All three groups of radiolarians generally produce small bi-flagellated cells, whose fate remains unclear [26,102], but may be gametes that are released into the water column.

The strongest evidence for sex within the 'Radiolaria' is found in Phaeodarea, specifically in the well-studied species *Aulacantha scolymantha*, which falls in the Cercozoa [75]. Synaptonemal complexes have been documented between the numerous (1000+) composite chromosomes. Each of these composite chromosomes subsequently segregates into developing bi-flagellated swarmer cells [103] and divides into eight chromosomes. However, complete evidence for sex is still lacking for this group, as cellular fusion and karyogamy have not been documented. Production of small bi-flagellated swarmer cells has also been observed in Polycystinea and Acantharea, which are closely related to Foraminifera [13]. These have been interpreted as 'isogametes' in the case of Acantharea [104], but cell fusion has not been observed for either lineage [105].

Evidence for sex becomes scarcer as organisms get smaller and more difficult to observe. For the small amoeboid flagellate forms, there are reports of cell fusions with subsequent encystment: *Helkesimastix faecicola* [106] and *Cercomonas longicauda* [107]. In *Cercomonas*, cells can aggregate and fuse in some species, thus forming plasmodia containing up to 100 nuclei [108,109]. Such plasmodia have also been documented in the vampyrellid *Lateromyxa gallica* [110,111], though the fate of these nuclei is unknown.

(c) Other amoeboid lineages: Heliozoa, Heterolobosea, Stramenopila and Opisthokonta

There are other amoeboid lineages scattered in the tree of eukaryotes, most with limited information on sex. The 'Heliozoa' have been split into four morphological lineages [33], three of which have been confirmed in molecular reconstructions [112]. One lineage, the Actinophryida nested within the Stramenopila, is reported to go through autogamy in the cyst [113]. The life cycles of all three remaining 'heliozoan' lineages, the Desmothoracida, Centrohelida and Gymnosphaerida remain poorly documented.

The Heterolobosea are a lineage of amoeboid flagellates nested within the Excavata [114]. *Heteramoeba clara* is reported to have a sexual life cycle consisting of a two mating-type system [115], although there is a certain amount of doubt to these experiments. The genome of *Naegleria gruberi* was recently sequenced, and reveals the presence of meiosis specific genes, supporting the presence of sex in this clade [116]. The acrasid cellular slime moulds have been shown to fall within the

Heterolobosea rather than with other sorocarpic slime moulds in Amoebozoa [9]. Complete life cycles have been documented for acrasids, but these contain no evidence for meiosis or karyogamy. Hence, we consider there is no evidence pointing to sex in this group.

The Labyrinthulidae and Thraustochytriidae are amoeboid organisms currently placed within the Stramenopila (or Heterokonta), which also includes the diatoms, brown algae and water moulds, in which sex is well established. A complete sexual cycle is described for both of these amoeboid lineages, with well-documented meiosis [117,118].

A number of orphan amoeboid lineages have recently been placed amidst the Opisthokonta (which also includes the Fungi and Metazoa). *Amoebidium parasiticum*, originally thought to be a fungus, has a multi-stage life cycle, but no sex has been reported [119]. Similarly, the nucleariid amoebae and *Fonticula alba* have shown no evidence of sex [49]. However, only a limited number of studies have focused on these taxa.

3. CONCLUSION

Evolutionary theory predicts that long-lived lineages should be sexual [7], and that asexual lineages derived from sexual ancestors will be short-lived owing to the negative effects of Muller's ratchet on the genome [120,121]. The two major clades that are dominated by amoebae, the Rhizaria and Amoebozoa (figure 2), are certainly very ancient. Fossil Arcellinida, a clade of testate amoebae within the Amoebozoa, has been found in 750 Myr old rocks [122]; Foraminifera and Polycystinea, two clades within Rhizaria, have fossil records that extend back at least to the Cambrian, i.e. 488–542 Ma ago [26,123]. Sex is a complex character and it is unlikely to have evolved independently in multiple lineages, or lost and regained multiple times [25]. Thus, the presence of sexual lineages scattered across Amoebozoa and Rhizaria suggests that these clades were ancestrally sexual. As in other branches of the eukaryotic tree sex may then have been lost independently in derived lineages.

Some amoeboid lineages may be genuinely asexual. One candidate for asexuality is *A. proteus*, which is the textbook example of binary fission in eukaryotes. A multitude of research groups have been culturing *A. proteus* and its relatives for more than a century without uncovering evidence supporting the existence of sex in this group. Yet, assuming asexuality may be precarious given the uncertainties regarding culturing conditions. Although the ultimate proof for sex, as defined here, is the observation of meiosis and subsequent karyogamy, genomic data from populations of *A. proteus* could reveal evidence of recombination. Such data are yet lacking for these and the majority of amoeboid protists.

The logical equation 'lack of evidence = asexual' is precarious, but the opposite stance is perhaps equally dangerous. Assuming that all lineages in Amoebozoa are sexual may mean discarding the possibility that alternative means to deal with Muller's ratchet have arisen independently. Microbial eukaryote lineages may well have different strategies, such as lateral gene transfer (LGT) and cyclic polyploidy. Bdelloid rotifers, a clade of asexual microscopic animals, provide the most famous example of an alternative mechanism to avoid

the ratchet: during rehydration following anhydrobiosis (a suspended animation state that allows the organism to survive dehydration), these organisms acquire foreign DNA and reorganize genomic regions [124]. This may well be a remarkable example of an evolutionary approach to reap the benefits of recombination, and could represent one of many strategies that eukaryotes have explored to avoid the deleterious effects of Muller's ratchet. If such an unusual mechanism appeared in Metazoa, comparably non-canonical mechanisms may have probably evolved among 30+ amoeboid lineages.

Cyclic polyploidy may be another evasion method for avoiding the impact of Muller's ratchet. Ploidy cycles may reduce the mutational load usually associated with high ploidy, and maintain the selective advantages of haploid genetic transmission [17]. Many microbial eukaryotes (amoeboid and others) experiment with ploidy changes that go far beyond the metazoan $n-2n$ (haploid-diploid) fluctuation [24]. For instance, *A. proteus* shows up to $3n$ variation during interphase, suggesting a cycle of polyploidization and return to haploidy before mitosis; and *E. histolytica* shows heterogeneity in nuclear ploidy owing to varying levels of endomitosis: within a population, individual trophozoites exhibit continuous variation from $4n$ to $40n$ [125]. The consequences of these phenomena are still poorly understood, as implications about the dynamics of eukaryotic genomes are only beginning to be explored [24].

An open question is whether LGT through endosymbiotic organisms may supply genetic variability to populations of amoebae. Diverse amoebae (e.g. *Acanthamoeba* spp., *Hartmannella* spp., *Arcella* spp., *Amoeba* spp.) harbour a wide variety of bacterial endosymbionts and viruses during their life cycle [126–129]. The possibility of genetic recombination between the amoeba and their multiple cytoplasmic inhabitants has just begun to be studied, as is the case of the giant amoeba-infecting Marseillevirus and Mimivirus that show evidence of chimeric genomes, with fragments of DNA acquired from multiple sources [130,131].

Well-resolved phylogenetic trees provide a framework to investigate possible sexuality and identify truly asexual lineages. *Amoeba proteus* is a member of the Amoebidae clade, for which no evidence for sex has been uncovered. The closely related Arcellinida are most probably sexual. Hence, the Amoebidae make an ideal group for deeply searching for signs of sex/asexuality. Documentation of the complete life cycle is difficult, but suitable alternative methods to identify the presence of sex include intense culturing and/or surveying of natural populations to document recombination (as predicted by meiosis) and genetic studies to identify a set of meiosis genes. In this case, there are three possible outcomes: (i) the Amoebidae are indeed sexual and we failed to document sex so far, (ii) the Arcellinida–Amoebidae ancestral was sexual and the Amoebidae became truly asexual independently, or (iii) the Amoebidae use a distinct strategy for evading Muller's ratchet, which might involve extensive LGT and/or ploidy cycles.

We conclude that the generalization of widespread asexuality in amoeboid organisms is superficial and a product of two main forces: (i) an intrinsic practical difficulty in studying microbial organisms, and (ii) the long held belief that amoeboid organisms are a single unit of evolution, as opposed to a morphological strategy that was

adopted by a wide variety of independent lineages. Amoebae are not fundamentally chaste. The timing and flow of events that lead each independent lineage to adopt an asexual or sexual life cycle must be evaluated separately. A multiple evidence approach, using a phylogenetic framework, gathering evidence on life cycles, genetic information on recombination and/or suits of meiotic genes will be more efficient in reconstructing the history of eukaryotic sexual life cycles. In line with Calkin's reasoning almost a century ago about the chemical constitution of amoebae [1], there is no reason to doubt that the rules of evolution governing sex in amoeboid organisms agree with that of other living beings. We predict that thorough and careful study of amoeboid organisms will reveal even more unusual ways of performing sex or otherwise exchanging genetic information. When discussing the sex of amoeboid protists, the existing evidence does not evoke chastity but rather Kama Sutra.

We are thankful for the many discussions and suggestions made by O. Roger Anderson, Yonas I. Tekle, Ben Normark, Michael Hood, Laura Ross and Matthew Brown, which greatly improved the manuscript, and Anna Kosakyan for the translation of Russian literature. We are indebted to Micah S. Dunthorn for providing the inspiration to pursue this question, and the thorough suggestions of two anonymous reviewers. D.J.G.L. was funded by CNPq (Conselho Nacional de Desenvolvimento Científico e Tecnológico, Brazil) fellowship GDE no. 200853/2007-4; L.A.K. by US National Science Foundation Assembling the Tree of Life grant 043115; E.A.D.M. by SNFR (Swiss National Fund for Research) projects nos. 205321-109709/1 and 205321-109709/2; and E.L. by SNFR Ambizione fellowship (PZ00P2-122042).

REFERENCES

- Calkins, G. N. 1916 General biology of the protozoan life cycle. *Am. Nat.* **50**, 257–270. (doi:10.1086/279539)
- Haeckel, E. H. P. A. 1866 *Generelle morphologie der organismen. Allgemeine grundzüge der organischen formenwissenschaft, mechanisch begründet durch die von charles darwin reformirte descendenztheorie*. Berlin, Germany: G. Reimer.
- Margulis, L. & Schwartz, K. 1988 *Five Kingdoms: an illustrated guide to the phyla of life on earth*, 2nd edn. New York, NY, W. H.: Freeman and Company.
- Whittaker, R. H. 1969 New concepts of Kingdoms of organisms. *Science* **163**, 150–160. (doi:10.1126/science.163.3863.150)
- Corliss, J. O. 1984 The Kingdom Protista and its 45 phyla. *Biosystems* **17**, 87–126. (doi:10.1016/0303-2647(84)90003-0)
- Mayr, E. 1964 *Systematics and the origin of species: from the viewpoint of a zoologist (with a new introduction by the author)*. New York, NY: Dover Publications, Inc.
- Maynard Smith, J. 1978 *The evolution of sex*. Cambridge, UK: Cambridge University Press.
- Bell, G. 1988 *Sex and death in protozoa: the history of an obsession*. Cambridge, UK: Cambridge University Press.
- Adl, S. M. et al. 2005 The new higher level classification of eukaryotes with emphasis on the taxonomy of protists. *J. Eukaryot. Microbiol.* **52**, 399–451. (doi:10.1111/j.1550-7408.2005.00053.x)
- Baldauf, S. L. 2003 The deep roots of eukaryotes. *Science* **300**, 1703–1706. (doi:10.1126/science.1085544)
- Cavalier-Smith, T. 1998 A revised six-kingdom system of life. *Biol. Rev. Camb. Phil. Soc.* **73**, 203–266. (doi:10.1017/S0006323198005167)

- 897 12 Keeling, P. J., Burger, G., Durnford, D. G., Lang, B. F.,
898 Lee, R. W., Pearlman, R. E., Roger, A. J. & Gray, M. W.
899 2005 The tree of eukaryotes. *Trends Ecol. Evol.* **20**,
900 670–676. (doi:10.1016/j.tree.2005.09.005)
- 901 13 Parfrey, L. W., Grant, J., Tekle, Y. I., Lasek-Nesselquist,
902 E., Morrison, H. G., Sogin, M. L., Patterson, D. J. &
903 Katz, L. A. 2010 Broadly sampled multigene analyses
904 yield a well-resolved eukaryotic tree of life. *Syst. Biol.*
905 **59**, 518–533. (doi:10.1093/sysbio/syq037)
- 906 14 Bonner, J. T. 1998 The origins of multicellularity. *Integr.*
907 *Biol. Issues News Rev.* **1**, 27–36. (doi:10.1002/(SICI)
908 1520-6602(1998)1:1<27::AID-INB14>3.0.CO;2-6)
- 909 15 Dacks, J. & Roger, A. J. 1999 The first sexual lineage
910 and the relevance of facultative sex. *J. Mol. Evol.* **48**,
911 779–783. (doi:10.1007/PL00013156)
- 912 16 Schwander, T. & Crespi, B. J. 2009 Twigs on the tree of
913 life? Neutral and selective models for integrating macro-
914 evolutionary patterns and microevolutionary processes
915 in the analysis of asexuality. *Mol. Ecol.* **18**, 28–42.
916 (doi:10.1111/j.1365-294X.2008.03992.x)
- 917 17 Kondrashov, A. S. 1997 Evolutionary genetics of life
918 cycles. *Annu. Rev. Ecol. Syst.* [Review] **28**, 391–435.
- 919 18 Weismann, A. 1889 *Essays on heredity and kindred biological*
920 *subjects*. Oxford, UK: Oxford University Press.
- 921 19 Muller, H. J. 1932 Some genetic aspects of sex. *Am.*
922 *Nat.* **66**, 118–138. (doi:10.1086/280418)
- 923 20 Muller, H. J. 1964 The relation of recombination to
924 mutational advance. *Mutat. Res. Fundam. Mol. Mech.*
925 *Mutagen.* **1**, 2–9. (doi:10.1016/0027-5107(64)90047-8)
- 926 21 Judson, O. P. & Normark, B. B. 1996 Ancient asexual
927 scandals. *Trends Ecol. Evol.* **11**, A41–A46. (doi:10.
928 1016/0169-5347(96)81040-8)
- 929 22 Otto, S. P. 2009 The evolutionary enigma of sex. *Am.*
930 *Nat.* **174**(Suppl. 1), S1–S14. (doi:10.1086/599084)
- 931 23 Ross, L., Pen, I. & Shuker, D. M. 2010 Genomic con-
932 flict in scale insects: the causes and consequences of
933 bizarre genetic systems. *Biol. Rev. Camb. Phil. Soc.* **85**,
934 807–828. (doi:10.1111/j.1469-185x.2010.00127.x)
- 935 24 Parfrey, L. W., Lahr, D. J. G. & Katz, L. A. 2008 The
936 dynamic nature of eukaryotic genomes. *Mol. Biol.*
937 *Evol.* **25**, 787–794. (doi:10.1093/molbev/msn032)
- 938 25 Dunthorn, M. & Katz, L. A. 2010 Secretive ciliates and
939 putative asexuality in microbial eukaryotes. *Trends*
940 *Microbiol.* **18**, 183–188. (doi:10.1016/j.tim.2010.02.005)
- 941 26 Anderson, O. R. 1981 *Radiolaria*. Berlin, Germany:
942 Springer Verlag.
- 943 27 Smith, R. J., Kamiya, T. & Horne, D. J. 2006 Living
944 males of the 'ancient asexual' Darwinulidae (Ostracoda:
945 Crustacea). *Proc. R. Soc. Lond. B* **273**, 1569–1578.
946 (doi:10.1098/rspb.2005.3452)
- 947 28 Croll, D. & Sanders, I. R. 2009 Recombination in
948 *Glomus intraradices*, a supposed ancient asexual arbuscu-
949 lar mycorrhizal fungus. *BMC Evol. Biol.* **9**, 13.
- 950 29 O'Gorman, C. M., Fuller, H. T. & Dyer, P. S. 2009 Dis-
951 covery of a sexual cycle in the opportunistic fungal
952 pathogen *Aspergillus fumigatus*. *Nature* **457**, 471–474.
953 (doi:10.1038/nature07528)
- 954 30 Pontecorvo, G. 1956 The parasexual cycle in Fungi.
955 *Annu. Rev. Microbiol.* **10**, 393–400. (doi:10.1146/
956 annurev.mi.10.100156.002141)
- 957 31 Birky, C. W. 2010 *Giardia* sex? Yes, but how and how
958 much? *Trends Parasitol.* **26**, 70–74. (doi:10.1016/j.pt.
959 2009.11.007)
- 960 32 Pawlowski, J. & Burki, F. 2009 Untangling the phylo-
geny of amoeboid protists. *J. Eukaryot. Microbiol.* **56**,
16–25.
- 33 Patterson, D. J. 1999 The diversity of eukaryotes. *Am.*
Nat. [Review]. **154**, S96–S124.
- 34 Shadwick, L. L., Spiegel, F. W., Shadwick, J. D. L.,
Brown, M. W. & Silberman, J. D. 2009 Eumycetozoa =
Amoebozoa?: SSU-rDNA phylogeny of protosteloid
slime molds and its significance for the amoebozoan
supergroup. *PLoS ONE* **4**, e6754.
- 35 Hurst, L. D., Hamilton, W. D. & Ladle, R. J. 1992
Covert sex. *Trends Ecol. Evol.* **7**, 144–145.
- 36 Cavalier-Smith, T. 2002 The phagotrophic origin of
eukaryotes and phylogenetic classification of Protozoa.
Int. J. Syst. Evol. Microbiol. **52**, 297–354.
- 37 Bonner, J. T. 1944 A descriptive study of the develop-
ment of the slime mold *Dictyostelium discoideum*.
Am. J. Bot. **31**, 175–182.
- 38 Bonner, J. T. 1947 Evidence for the formation of cell
aggregates by chemotaxis in the development of the
slime mold *Dictyostelium discoideum*. *J. Exp. Zool.* **106**,
1–26.
- 39 Erdos, G. W., Raper, K. B. & Vogen, L. K. 1973 Mating
types and macrocyst formation in *Dictyostelium discoi-*
deum. *Proc. Natl Acad. Sci. USA* **70**, 1828–1830.
- 40 Erdos, G. W., Raper, K. B. & Vogen, L. K. 1975 Sexu-
ality in cellular slime mold *Dictyostelium giganteum*. *Proc.*
Natl Acad. Sci. USA **72**, 970–973.
- 41 Macinnes, M. A. & Francis, D. 1974 Meiosis in *Dictyos-*
telium mucoroides. *Nature* **251**, 321–324. (doi:10.1038/
251321a0)
- 42 Fiore-Donno, A. M., Berney, C., Pawlowski, J. &
Baldauf, S. A. 2005 Higher-order phylogeny of plasmo-
dial slime molds (Myxogastria) based on elongation
factor 1-a and small subunit rRNA gene sequences.
J. Euk. Microbiol. **52**, 201–210.
- 43 Martin, G. W. & Alexopoulos, C. J. 1969 *The myxomy-*
cetes. Iowa City, IA: University of Iowa Press.
- 44 Collins, O. R. & Tang, H. C. 1977 New mating types in
Physarum polycephalum. *Mycologia* **69**, 421–423.
- 45 Michel, R., Wylezich, C., Hauroder, B. & Smirnov, A.
2006 Phylogenetic position and notes on the ultrastruc-
ture of *Sappinia diploidea* (thecamoebidae). *Protistology*
4, 319–325.
- 46 Goodfellow, L. P., Belcher, J. H. & Page, F. C. 1974
A light- and electron-microscopical study of
Sappinia diploidea, a sexual amoeba. *Protistologica* **2**,
207–216.
- 47 Wenrich, D. H. 1954 Sex in Protozoa: A comparative
review. In *Sex in microorganisms. A symposium* (ed.
D. H. Wenrich), p. 362. Washington, DC: AAAS.
- 48 Brown, M. W., Spiegel, F. W. & Silberman, J. D. 2007
Amoeba at attention: phylogenetic affinity of *Sappinia*
pedata. *J. Eukaryot. Microbiol.* **54**, 511–519.
- 49 Brown, M. W., Spiegel, F. W. & Silberman, J. D. 2009
Phylogeny of the 'forgotten' cellular slime mold, *Fonti-*
cula alba, reveals a key evolutionary branch within
Opisthokonta. *Mol. Biol. Evol.* **26**, 2699–2709.
- 50 Spiegel, F. W. & Olive, L. S. 1978 New evidence for val-
idity of *Copromyxa protea*. *Mycologia* **70**, 843–847.
- 51 Mignot, J.-P. & Raikov, I. B. 1992 Evidence for meiosis
in the testate amoeba *Arcella*. *J. Eukaryot. Microbiol.* **39**,
287–289.
- 52 Moses, M. J. 1969 Structure and function of the synap-
tonemal complex. *Genetics* **61**(Suppl. 1), 41–51.
- 53 Lahr, D. J., Nguyen, T. B., Barbero, E. & Katz, L. A.
2011 Evolution of the actin gene family in testate
lobose amoebae (Arcellinida) is characterized by 2 dis-
tinct clades of paralogs and recent independent
expansions. *Mol. Biol. Evol.* **28**, 223–236. (doi:10.
1093/molbev/msq200)
- 54 Lüftenegger, G. & Foissner, W. 1991 Morphology and
biometry of twelve soil testate amoebae (Protozoa, Rhi-
zopoda) from Australia, Africa, and Austria. *Bull. Br.*
Mus. Nat. Hist. (Zoology) **57**, 1–16.
- 55 Meisterfeld, R. 2002 Order Arcellinida kent, 1880.
In *The illustrated guide to the Protozoa* (eds J. J. Lee,
961 962 963 964 965 966 967 968 969 970 971 972 973 974 975 976 977 978 979 980 981 982 983 984 985 986 987 988 989 990 991 992 993 994 995 996 997 998 999 1000 1001 1002 1003 1004 1005 1006 1007 1008 1009 1010 1011 1012 1013 1014 1015 1016 1017 1018 1019 1020 1021 1022 1023 1024

- 1025 G. F. Leedale & P. Bradbury), pp. 827–860, 2nd edn. 1089
 1026 Lawrence, KS: Allen Press. 1090
- 1027 56 Dangeard, L. 1937 Memoirs sur le difflugia globulosa 1091
 1028 dujardin. *Le Botaniste* **28**, 229–274. 1092
- 1029 57 Rhumbler, H. 1898 Zelleib-, schalen-, und kern- 1093
 1030 versmelzungen bei den rhizopoden und deren 1094
 1031 wahrscheinliche beziehungen zu phylogenetischen vorstufen 1095
 1032 der metazoebefruchtung. 2. *Biologisches Centralblatt* 1096
 1033 **18**, 33–38. 1097
- 1034 58 Heger, T. J., Mitchell, E. A. D., Ledeganck, P., Vincke, 1098
 1035 S., Van de Vijver, B. & Beyens, L. 2009 The curse of 1099
 1036 taxonomic uncertainty in biogeographical studies of 1100
 1037 free-living terrestrial protists: a case study of testate 1101
 1038 amoebae from Amsterdam island. *J. Biogeogr.* **36**, 1102
 1039 1551–1560. 1103
- 1040 59 Lahr, D. J. G. & Lopes, S. 2009 Evaluating the taxonomic 1104
 1041 identity in four species of the lobose testate 1105
 1042 amoebae genus *Arcella* Ehrenberg, 1832. *Acta Protozoolog.* 1106
 1043 **48**, 127–142. 1107
- 1044 60 Seravin, L. N. & Goodkov, A. V. 1984 Possible forms of 1108
 1045 agamic genetic interactions in protists and ways of estab- 1109
 1046 lishment of the sexual process. *Tsitologiya* **26**, 1224– 1110
 1047 1236. 1111
- 1048 61 Seravin, L. N. & Goodkov, A. V. 1984 The main types 1112
 1049 and forms of agamic cell fusion in Protozoa. *Tsitologiya* 1113
 1050 **26**, 123–131. 1114
- 1051 62 Smirnov, A. V. & Goodkov, A. V. 1999 An illustrated list 1115
 1052 of basic morphotypes of Gymnamoebia (Rhizopoda, 1116
 1053 Lobosea). *Protistology* **1**, 20–29. 1117
- 1054 63 Dykova, I., Fiala, I., Peckova, H. & Dvorakova, H. 2008 1118
 1055 Phylogeny of Flabellulidae (Amoebozoa: Leptomyxida) 1119
 1056 inferred from SSU rDNA sequences of the type strain 1120
 1057 of *Flabellula citata* Schaeffer, 1926 and newly isolated 1121
 1058 strains of marine amoebae. *Folia Parasitol.* **55**, 256–264. 1122
- 1059 64 Sargeant, P. G., Jackson, T. F., Wiffen, S. R. & 1123
 1060 Bhojnani, R. 1988 Biological evidence of genetic 1124
 1061 exchange in *Entamoeba histolytica*. *Trans. R. Soc. Trop. 1125
 1062 Med. Hyg.* **82**, 862–867. 1126
- 1063 65 Blanc, D., Nicholls, R. & Sargeant, P. G. 1989 Exper- 1127
 1064 imental production of new zymodemes of *Entamoeba 1128
 1065 histolytica* supports the hypothesis of genetic exchange. 1129
 1066 *Trans. R. Soc. Trop. Med. Hyg.* **83**, 787–790. 1130
- 1067 66 Loftus, B. et al. 2005 The genome of the protist parasite 1131
 1068 *Entamoeba histolytica*. *Nature* **433**, 865–868. 1132
- 1069 67 Ramesh, M. A., Malik, S.-B. & Longsdon, J. M. 2005 1133
 1070 A phylogenomic inventory of meiotic genes: evidence 1134
 1071 for sex in *Giardia* and an early eukaryotic origin of meiosis. 1135
 1072 *Curr. Biol.* **15**, 185–191. 1136
- 1073 68 Stanley, J. S. L. 2005 The *Entamoeba histolytica* genome: 1137
 1074 something old, something new, something borrowed 1138
 1075 and sex too? *Trends Parasitol.* **21**, 451. 1139
- 1076 69 Angell, R. W. 1976 Observations on *Trichosphaerium platyxyrum* sp. n. *J. Protozool.* **23**, 357–364. 1140
- 1077 70 Schuster, F. L. 1976 Fine structure of the schizont stage 1141
 1078 of the testate marine amoeba, *Trichosphaerium* sp. 1142
 1079 *J. Euk. Microbiol.* **23**, 86–93. 1143
- 1080 71 Schaudinn, F. R. 1899 Untersuchungen über den generationswechsel von *Trichosphaerium sieboldi*. *Sch. Abh. Konigl. Preuss. Akd. Wiss.* (Berlin Suppl.), 1–93. 1144
- 1081 72 Whatley, J. & Chapman-Andresen, C. 1990 Phylum Karyoblastea. In *Handbook of Protoctista* (eds L. Margulis, J. O. Corliss, M. Melkonian & D. Chapman), pp. 167–185. Boston, MA: Jones and Bartlett Publishers. 1145
- 1082 73 Ekelund, F. & Patterson, D. J. 1997 Some heterotrophic flagellates from a cultivated soil in Australia. *Arch. Protistenk.* **148**, 461–478. 1146
- 1083 74 Foissner, W. 1991 Diversity and ecology of soil flagellates. In *The biology of free-living heterotrophic flagellates* (eds D. J. Patterson & J. Larsen), pp. 93–112. Oxford, UK: Clarendon Press. 1147
- 75 Bass, D., Chao, E. E. Y., Nikolaev, S., Yabuki, A., Ishida, K. I., Berney, C., Pakzad, U., Wylezich, C. & Cavalier-Smith, T. 2009 Phylogeny of novel naked filose and reticulose Cercozoa: Granofilosea cl. n. and Proteomyxidea revised. *Protist* **160**, 75–109. 1093
- 76 Bowser, S. S. & Travis, J. L. 2002 Reticulopodia: structural and behavioral basis for the suprageneric placement of granuloreticulosan protists. *J. Foraminiferal Res.* **32**, 440–447. 1094
- 77 Goldstein, S. T. 1999 Foraminifera: a biological overview. In *Modern foraminifera* (ed. B. K. Sen Gupta), pp. 37–56. Dordrecht, The Netherlands: Kluwer. 1095
- 78 Arnold, Z. M. 1972 Observations on the biology of the protozoan *Gromia oviformis* Dujardin. Berkeley, CA: University of California Press. 1096
- 79 Matz, M. V., Frank, T. M., Marshall, N. J., Widder, E. A. & Johnsen, S. 2008 Giant deep-sea protist produces bilaterian-like traces. *Curr. Biol.* **18**, 1849–1854. (doi:10.1016/j.cub.2008.10.028) 1097
- 80 Pina-Ochoa, E. et al. 2010 Widespread occurrence of nitrate storage and denitrification among Foraminifera and Gromiida. *Proc. Natl Acad. Sci. USA* **107**, 1148–1153. (doi:10.1073/pnas.0908440107) 1098
- 81 Tolonen, K., Warner, B. G. & Vasander, H. 1992 Ecology of testaceans (Protozoa, Rhizopoda) in mires in southern finland. I. Autecology. *Arch. Protistenk.* **142**, 119–138. 1099
- 82 Mitchell, E. A. D., Charman, D. J. & Warner, B. G. 2008 Testate amoebae analysis in ecological and paleoecological studies of wetlands: past, present and future. *Biodivers. Conserv.* **17**, 2115–2137. (doi:10.1007/s10531-007-9221-3) 1100
- 83 Wylezich, C., Meisterfeld, R., Meisterfeld, S. & Schlegel, M. 2002 Phylogenetic analyses of small subunit ribosomal RNA coding regions reveal a monophyletic lineage of euglyphid testate amoebae (Order Euglyphida). *J. Eukaryot. Microbiol.* **49**, 108–118. (doi:10.1111/j.1550-7408.2002.tb00352.x) 1101
- 84 Lara, E., Heger, T. J., Mitchell, E. A. D., Meisterfeld, R. & Ekelund, F. 2007 SSU rRNA reveals a sequential increase in shell complexity among the euglyphid testate amoebae (Rhizaria: Euglyphida). *Protist* **158**, 229–237. (doi:10.1016/j.protis.2006.11.006) 1102
- 85 Heger, T. J., Mitchell, E. A. D., Todorov, M., Golemansky, V., Lara, E., Leander, B. S. & Pawlowski, J. 2010 Molecular phylogeny of euglyphid testate amoebae (Cercozoa: Euglyphida) suggests transitions between marine supralittoral and freshwater/terrestrial environments are infrequent. *Mol. Phylogenet. Evol.* **55**, 113–122. (doi:10.1016/j.ympev.2009.11.023) 1103
- 86 Reukauf, E. 1912 Zur encystierung von *Euglypha alveolata*. *Zoolog. Anzeiger* **39**, 372–375. 1104
- 87 Penard, E. 1902 *Faune rhizopodique du bassin du léman*. Geneva, Switzerland: Henry Kundig. 1105
- 88 Awerintzew, S. 1906 Die süßwasser Rhizopoden. I and II. *Trudui S.-Peter. Oscch* **36**, 351. 1106
- 89 Blochmann, F. 1887 Zur kenntniss der fortpflanzung von *Euglypha alveolata* Dujardin. *Morphologische Jahrbuch* **13**, 173–183. 1107
- 90 Cash, J., Wailes, G. H. & Hopkinson, J. 1915 *The British freshwater Rhizopoda and Heliozoa: Rhizopoda part 3*. London, UK: The Ray Society. 1108
- 91 Chardez, D. 1965 On the particular mode and little understood reproduction in aquatic thecamoebae (Rhizopoda; Testacea). *Bull. Inst. Agron. Sta. Rech. Gembloux* **33**, 26–34. 1109
- 92 Valkanov, A. 1962 *Euglyphella delicatula* n. g., n. sp. (Rhizopoda Testacea) und ihre kopulation. *Dokl. Bolgar-koi Akad. Nauk* **15**, 207–209. 1110
- 93 Schonborn, W. & Peschke, T. 1990 Evolutionary studies on the *Assulina-Valkanovia* complex (Rhizopoda, 1111

- Testaceaflosia) in sphagnum and soil. *Biol. Fertil. Soils* **9**, 95–100. (doi:10.1007/BF00335790)
- 94 Valkanov, A. 1962 Über die kopulation der testaceen (Rhizopoda Testacea). *Dokl. Bolgarskoi Akad. Nauk* **15**, 305–308.
- 95 Iudina, T. A. & Sukhanova, K. M. 2000 The testate amoeba *Corythion delamarei*: cell biology and life cycle. *Tsitologiya* **42**, 613–623.
- 96 Sukhanova, I. N. & Cheban, E. A. 1990 Heterotrophic phytoplankton of the Black-Sea in the early spring period of the phytocen development. *Okeanologiya* **30**, 979–986.
- 97 Cavalier-Smith, T. & Chao, E. E. Y. 2003 Phylogeny and classification of phylum Cercozoa (protozoa). *Protist* **154**, 341–358. (doi:10.1078/143446103322454112)
- 98 Archibald, J. M. 2009 The puzzle of plastid evolution. *Curr. Biol. CB* **19**, R81–R88. (doi:10.1016/j.cub.2008.11.067)
- 99 Grell, K. G. 1990 Indications of sexual reproduction in the plasmodial protist *Chlorarachnion reptans* Geitler. *Zeitsch. Naturforsch. C* **45**, 112–114.
- 100 Beutlich, A. & Schnetter, R. 1993 The life-cycle of *Cryptochlora perforans* (Chlorarachniophyta). *Bot. Acta* **106**, 441–447.
- 101 Braselton, J. P. 2002 Phylum Plasmodiophora (Plasmodiophoromycota). In *The illustrated guide to the Protozoa* (eds J. J. Lee, G. F. Leedale & P. C. Bradbury), 2nd edn. Lawrence, KS: Society of Protozoologists.
- 102 Raikov, I. B. 1982 *The protozoan nucleus: morphology and evolution*. Wien, Austria: Springer-Verlag.
- 103 Grell, K. G. & Ruthmann, A. 1964 Über die karyologie des radiolar *Aulacantha scolymantha* und die feinstruktur seiner chromosomen. *Chromosoma* **15**, 185–211 (doi:10.1007/BF00285729)
- 104 Febvre, C., Febvre, J. & Michaels, A. F. 2002 Class Acantharea. In *The illustrated guide to the Protozoa* (eds J. J. Lee, G. F. Leedale & P. C. Bradbury), pp. 1055–1084. Lawrence, KS: Society of Protozoologists.
- 105 Anderson, O. R., Nigrini, C., Boltovskoy, D., Takahashi, K. & Swanberg, N. R. 2002 Class Polycystina. In *The illustrated guide to the protozoa* (eds J. J. Lee, G. F. Leedale & P. C. Bradbury), pp. 994–1022, 2nd edn. Lawrence, KS: Society of Protozoologists.
- 106 Woodcock, H. M. & Lapage, G. 1915 Observations on the life-cycle of a new flagellate, *Helkesimastix faecicola*, n. g., n. sp.: together with remarks on the question of syngamy in the trypanosomes. *Proc. R. Soc. Lond. B* **88**, 353–370. (doi:10.1098/rspb.1915.0001)
- 107 Woodcock, H. M. 1916 Observations on coprozoic flagellates. *Phil. Trans. R. Soc. Lond. B* **207**, 375–412. (doi:10.1098/rstb.1916.0008)
- 108 Shirkina, N. I. 1987 Biological features in some flagellates of the genus *Cercomonas* (Rhizomastigida, Cercomonadidae). *Zool. Z.* **66**, 485–489.
- 109 Karpov, S. A. 1997 Cercomonads and their relationship to the myxomycetes. *Arch. Protistenkunde* **148**, 297–307.
- 110 Hulsmann, N. 1993 *Lateromyxa gallica* n. g. n. sp. (Vampyrellidae)—a filopodial ameoboid protist with a novel life-cycle and conspicuous ultrastructural characters. *J. Eukaryot. Microbiol.* **40**, 141–149. (doi:10.1111/j.1550-7408.1993.tb04894.x)
- 111 Ropstorff, P., Hulsmann, N. & Hausmann, K. 1993 Karyological investigations on the vampyrellid filose amoeba *Lateromyxa gallica* Hulsmann 1993. *Eur. J. Protistol.* **29**, 302–310.
- 112 Nikolaev, S. I., Berney, C., Fahrni, J. F., Bolivar, I., Polet, S., Mylnikov, A. P., Aleshin, V. V., Petrov, N. B. & Pawlowski, J. 2004 The twilight of Heliozoa and rise of Rhizaria, an emerging supergroup of amoeboid eukaryotes. *Proc. Natl Acad. Sci. USA* **101**, 8066–8071. (doi:10.1073/pnas.0308602101)
- 113 Mikrjukov, K. A. & Patterson, D. J. 2001 Taxonomy and phylogeny of Heliozoa. III. Actinophryids. *Acta Protozoolog.* **40**, 3–25.
- 114 Simpson, A. G. B. 2003 Cytoskeletal organization, phylogenetic affinities and systematics in the contentious taxon Excavata (Eukaryota). *Int. J. Syst. Evol. Microbiol.* **53**, 1759–1777. (doi:10.1099/ijs.0.02578-0)
- 115 Droop, M. R. 1961 Evidence for a sexual phase in life-cycle of an amoeba. *Nature* **192**, 281. (doi:10.1038/192281a0)
- 116 Fritz-Laylin, L. K. *et al.* 2010 The genome of *Naegleria gruberi* illuminates early eukaryotic versatility. *Cell* **140**, 631–642. (doi:10.1016/j.cell.2010.01.032)
- 117 Perkins, F. O. & Amon, J. P. 1969 Zoosporulation in *Labyrinthula* sp.—an electron microscope study (Article). *J. Protozoolog.* **16**, 235–257.
- 118 Moens, P. B. & Perkins, F. O. 1969 Chromosome number of a small protist — accurate determination (Article). *Science* **166**, 1289–1291.
- 119 Sumbali, G. 2005 *The fungi* (ed. B. M. Johri). Middlesex, UK: Alpha Science International.
- 120 Hamilton, W. D. 2001 *Narrow roads of gene land, vol. 2: The evolution of sex*. Oxford, UK: Oxford University Press.
- 121 Felsenstein, J. 1974 The evolutionary advantage of recombination. *Genetics* **78**, 737–756.
- 122 Porter, S. M. & Knoll, A. H. 2000 Testate amoebae in the neoproterozoic era: evidence from vase-shaped microfossils in the Chuar group, Grand Canyon. *Paleobiology* **26**, 360–385. (doi:10.1666/0094-8373(2000)026<0360:TAITNE>2.0.CO;2)
- 123 Sen Gupta, B. K. 1999 Introduction to modern foraminifera. In *Modern foraminifera* (ed. B. K. Sen Gupta), pp. 1–6. Dordrecht, The Netherlands: Kluwer.
- 124 Gladyshev, E. A. & Arkhipova, I. R. 2010 Genome structure of bdelloid rotifers: shaped by asexuality or desiccation? *J. Hered.* **101**(Suppl. 1), S85–S93. (doi:10.1093/jhered/esq008)
- 125 Lohia, A. 2003 The cell cycle of *Entamoeba histolytica*. *Mol. Cell. Biochem.* **253**, 217–222. (doi:10.1023/A:1026055631421)
- 126 Török, J. K., Pollák, B., Heéger, Z., Csikós, G. & Márialigeti, K. 2008 First evidence of bacterial endocytobionts in the lobose testate amoeba *Arcella* (Amoebozoa, Arcellinida). *Protistology* **5**, 303–312.
- 127 Corsaro, D. & Venditti, D. 2009 Detection of chlamydiae from freshwater environments by PCR, amoeba coculture and mixed coculture. *Res. Microbiol.* **160**, 547–552. (doi:10.1016/j.resmic.2009.08.001)
- 128 Jeon, K. W. 2004 Genetic and physiological interactions in the amoeba–bacteria symbiosis. *J. Eukaryot. Microbiol.* **51**, 502–508. (doi:10.1111/j.1550-7408.2004.tb00277.x)
- 129 Greub, G. & Raoult, D. 2004 Microorganisms resistant to free-living amoebae. *Clin. Microbiol. Rev.* **17**, 413–433. (doi:10.1128/CMR.17.2.413-433.2004)
- 130 Boyer, M. *et al.* 2009 Giant marseillevirus highlights the role of amoebae as a melting pot in emergence of chimeric microorganisms. *Proc. Natl Acad. Sci. USA* **106**, 21848–21853. (doi:10.1073/pnas.0911354106)
- 131 Moreira, D. & Brochier-Armanet, C. 2008 Giant viruses, giant chimeras: the multiple evolutionary histories of mimivirus genes. *BMC Evol. Biol.* **8**, 12. (doi:10.1186/1471-2148-8-12)